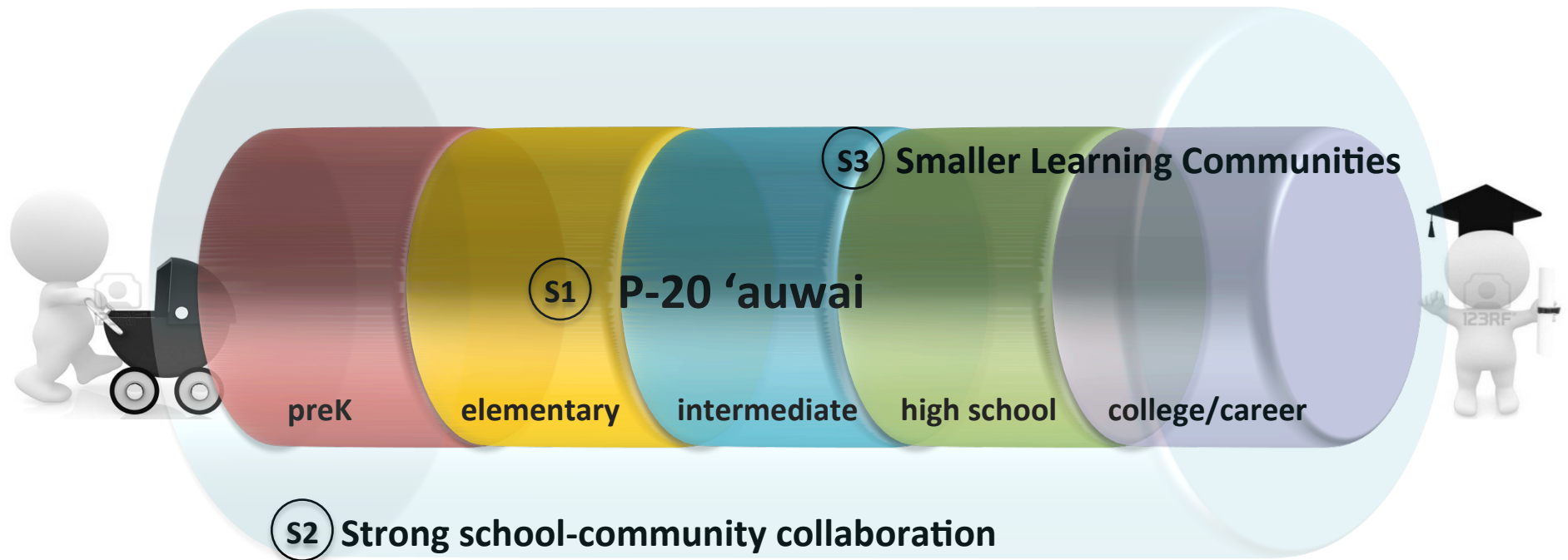


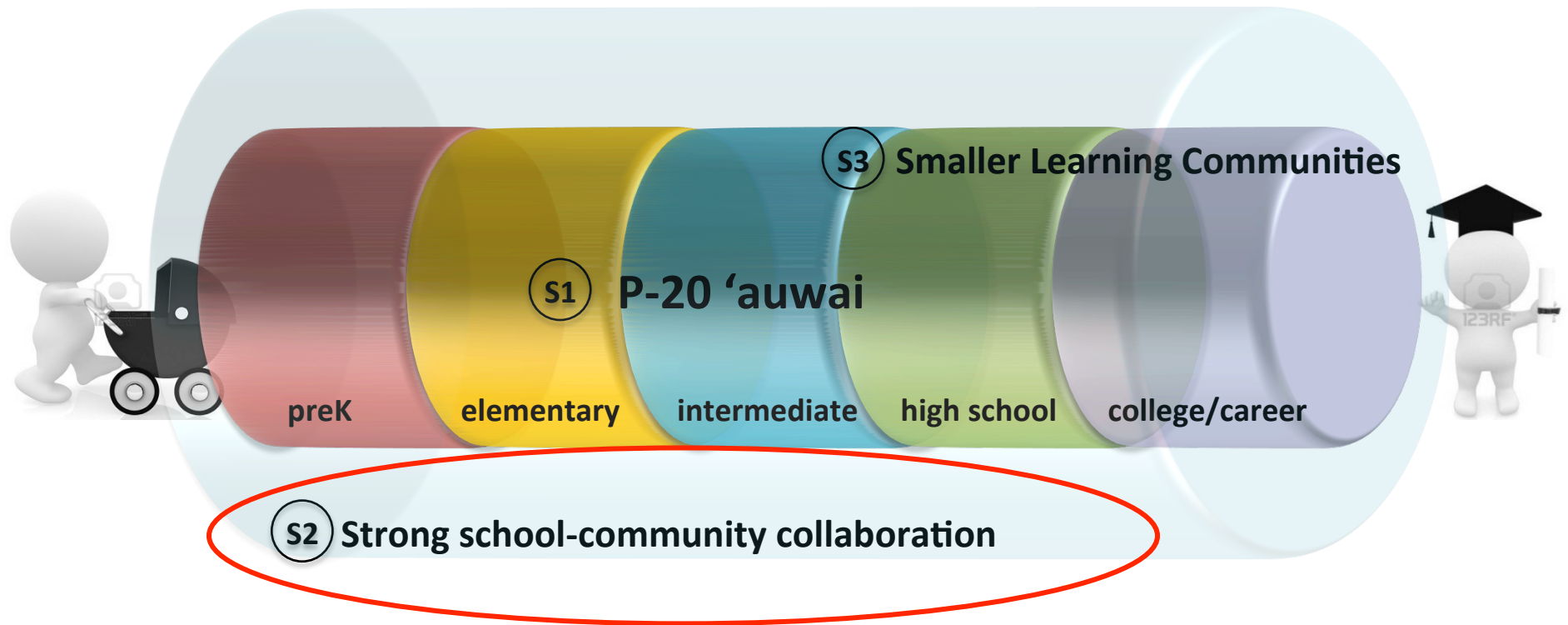
Castle Complex Redesign 'Auwai

3 Interconnected Strategies, 4 Priorities over 5 years



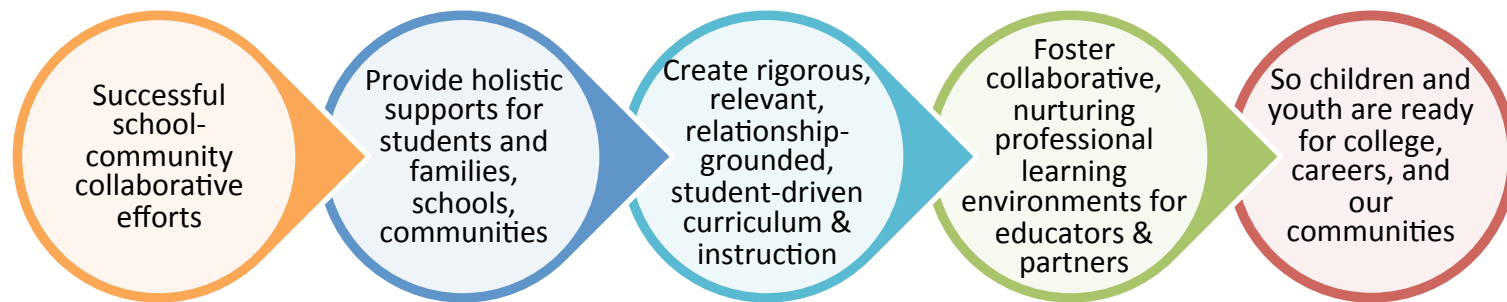
Castle Complex Redesign 'Auwai

3 Interconnected Strategies, 4 Priorities over 5 years



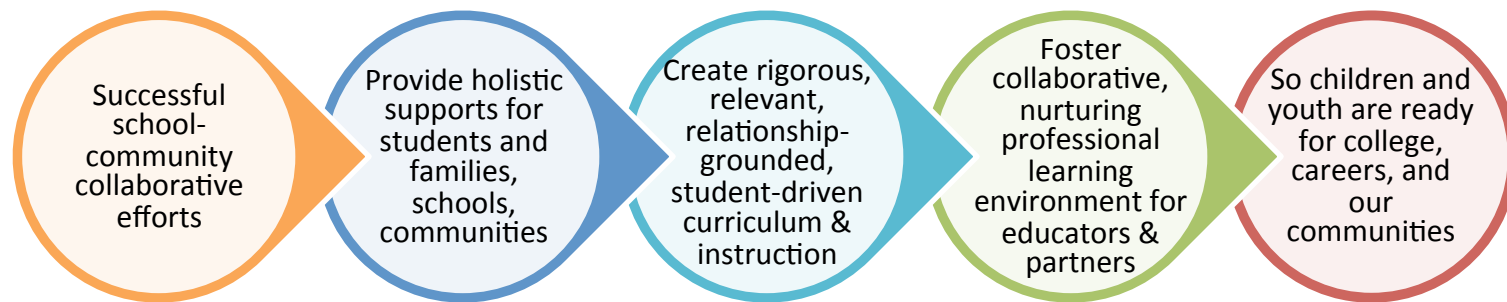
What we've learned (thus far)

it's all about the network.



What we've learned (thus far)

it's all about the network.

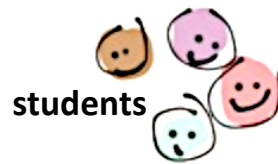


If we can build a strong, coordinated, capable, collaborative network

we will improve student learning, strengthen families and create healthier communities

Lesson #1

**if it's about the
network, someone has
to coordinate it.**



students



Community influencers



Elected officials



Families & parents



Redesign Team



athletics



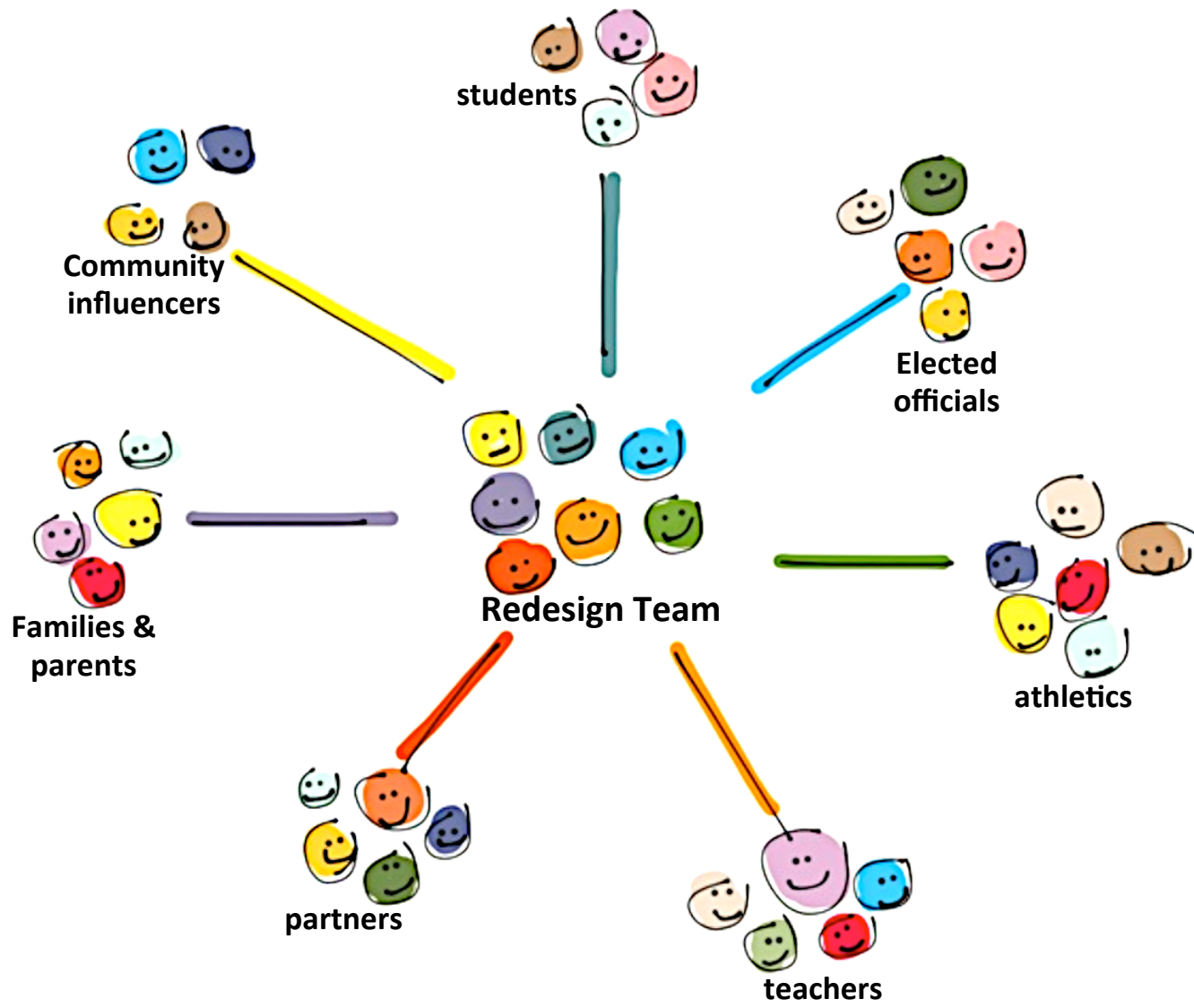
partners

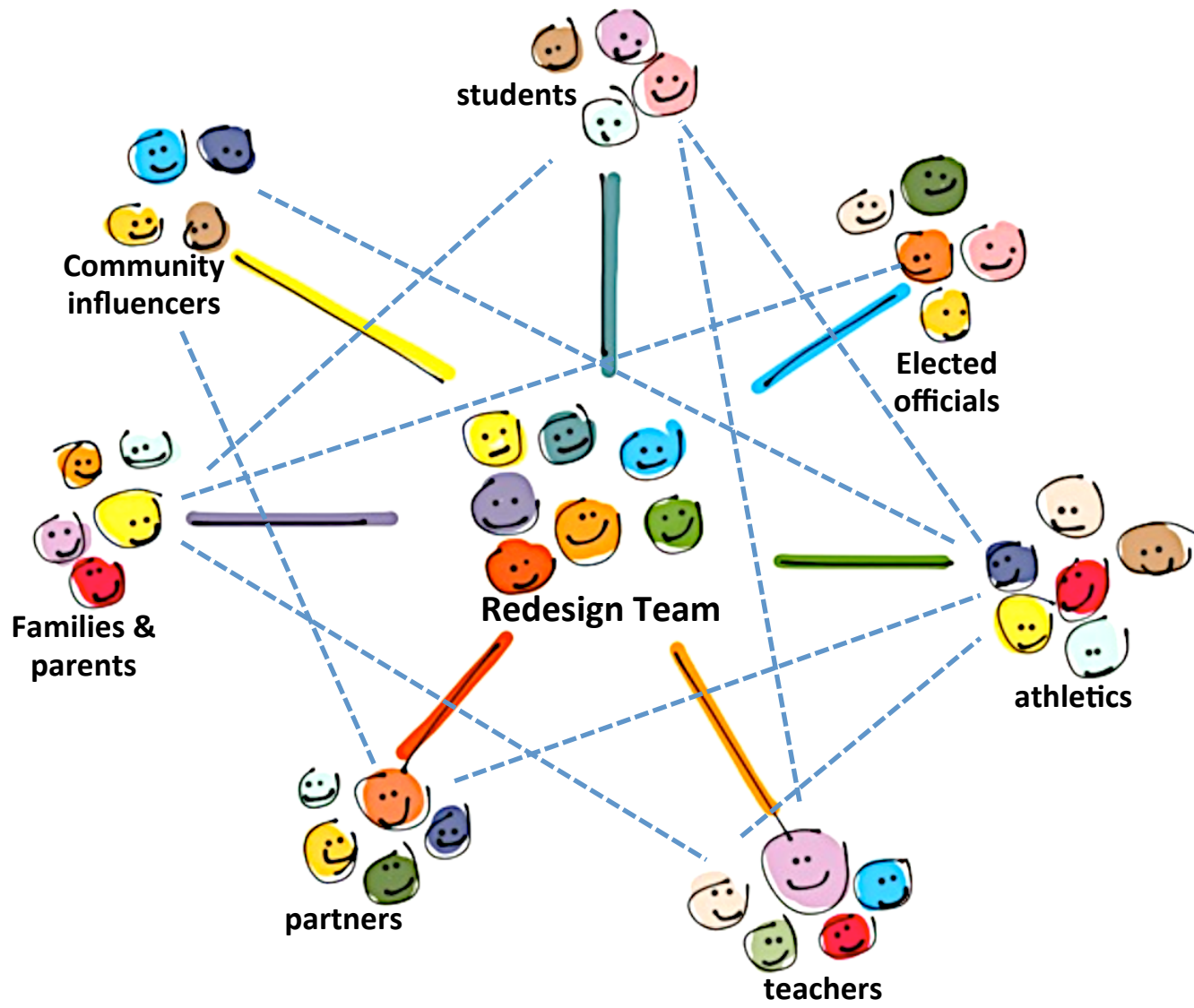


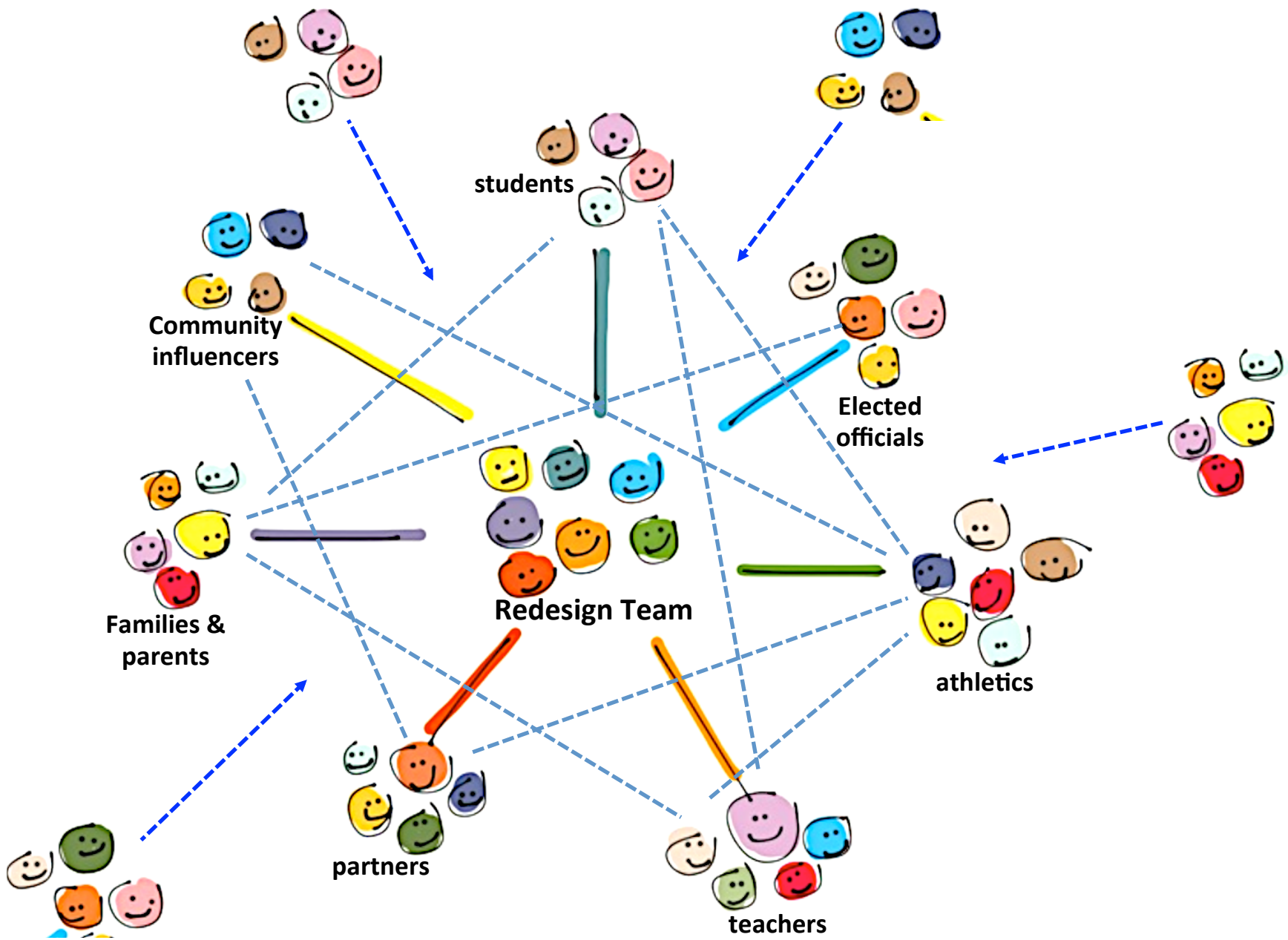
teachers

Lesson #2

**if it's about the network,
(someone has to)
pay attention to the links.**

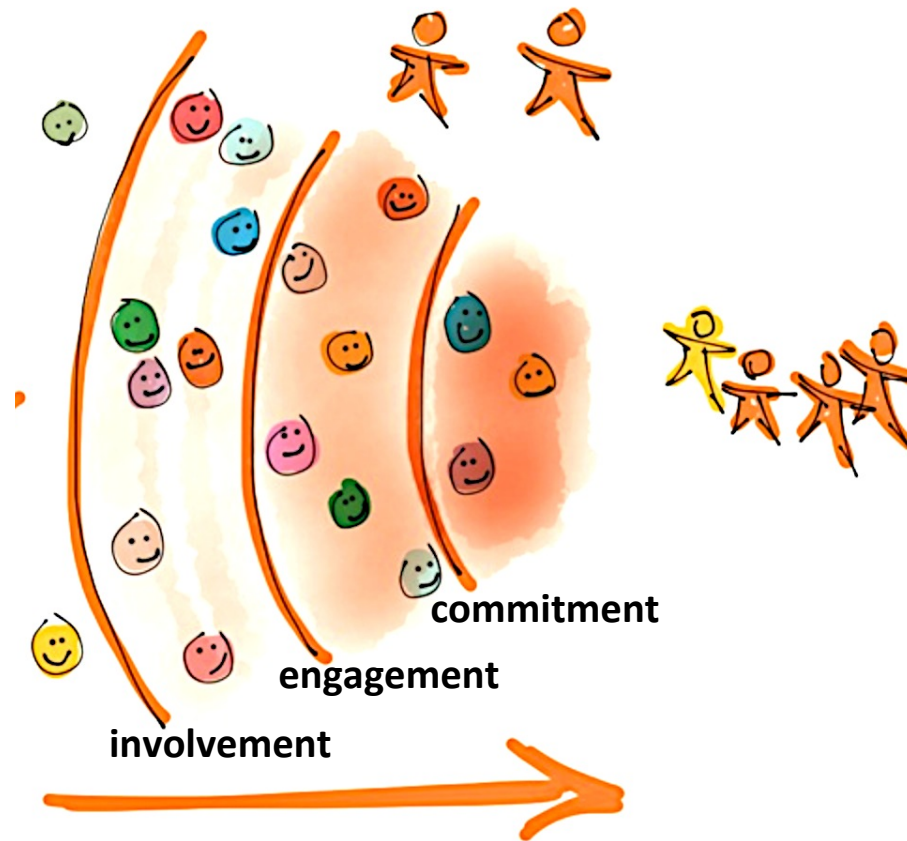






Lesson #3

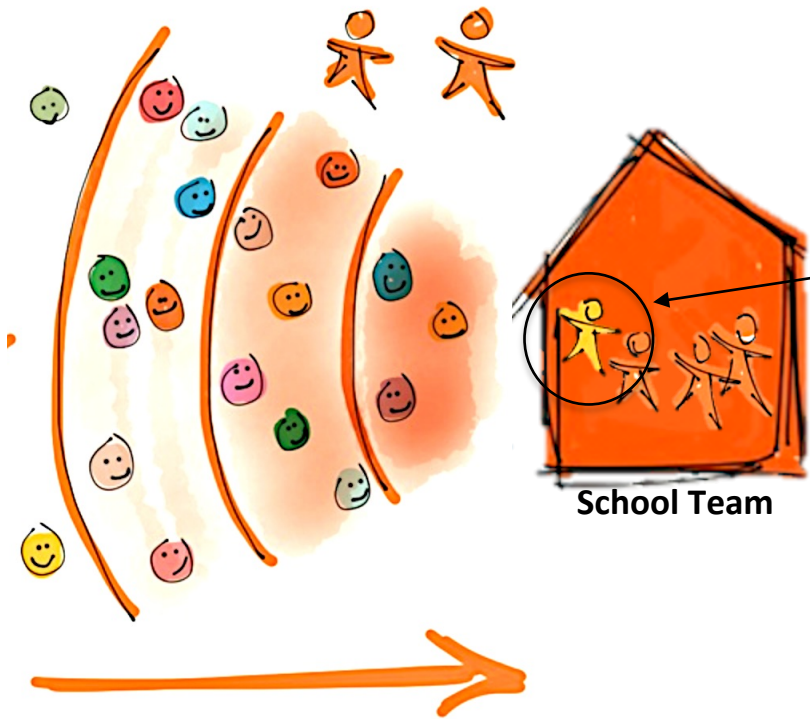
**it's a process, not a
workshop.**



	Academics, college/career preparation	Leadership, character education	Health & wellbeing
involvement	Resource Providers <i>Finances, facilities/location, personnel, networks</i>		
engagement	Tier 2 Providers <i>Internships, workshops, programs, services</i>		
Commitment	Curriculum Co-developers	Individual Mentors	

Lesson #4

**coordinating the network
is a full-time job.**



Site coordinator

	Academics, college/career preparation	Leadership, character education	Health & wellbeing
involvement	Resource Providers <i>Finances, facilities/location, personnel, networks</i>		
engagement	Tier 2 Providers <i>Internships, workshops, programs, services</i>		
Commitment	Curriculum Co-developers	Individual Mentors	

Implementation, Year 1

55 teachers

6 months of facilitated PD

7 community partners CC PD

4 curriculum units +8

Po'okela Academy

53 students

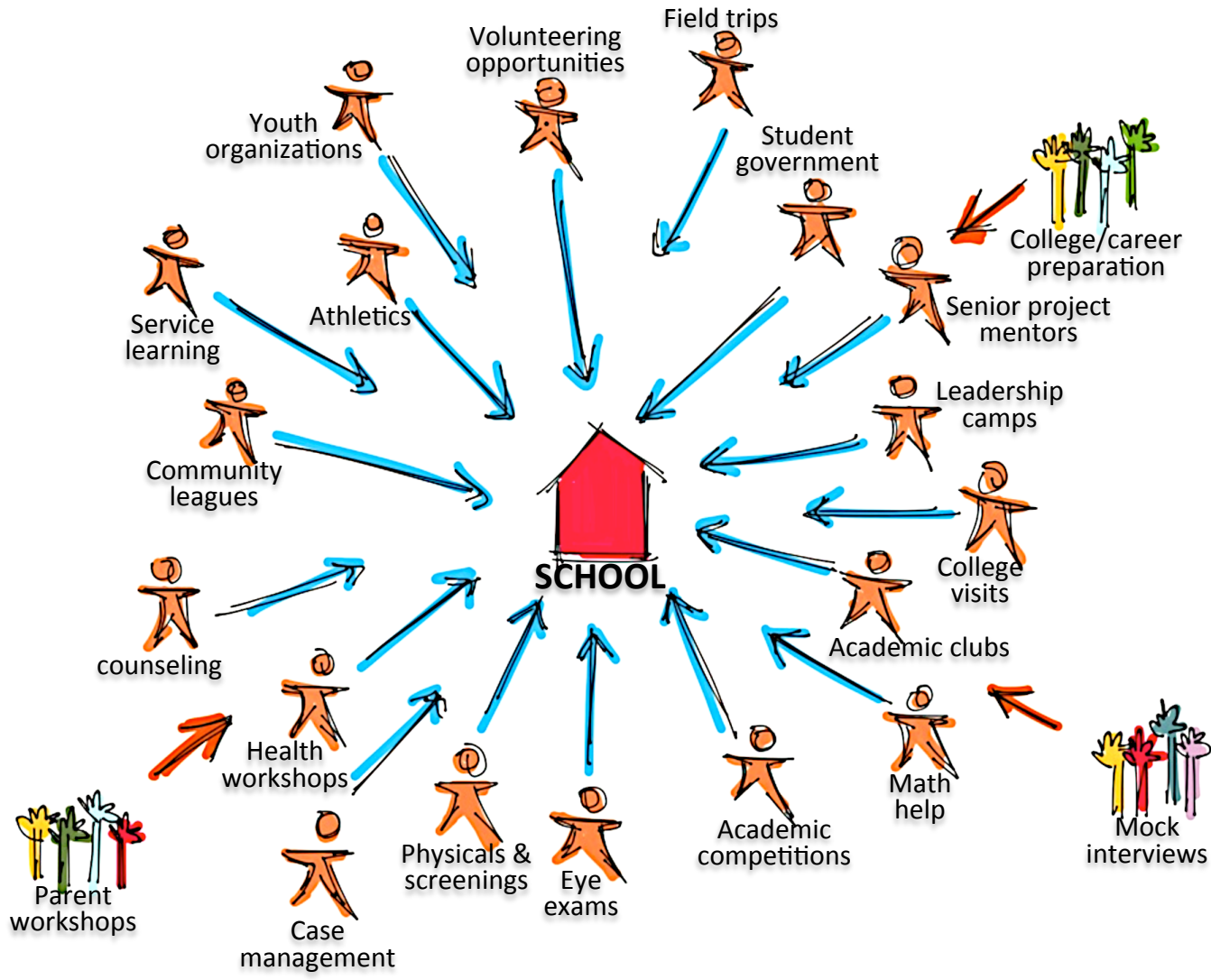
6 'aina based organizations

1-2x per week

Family Hui

**what does this
mean for you?**

a reminder on context



Thought #1

who is your champion?

Thought #2

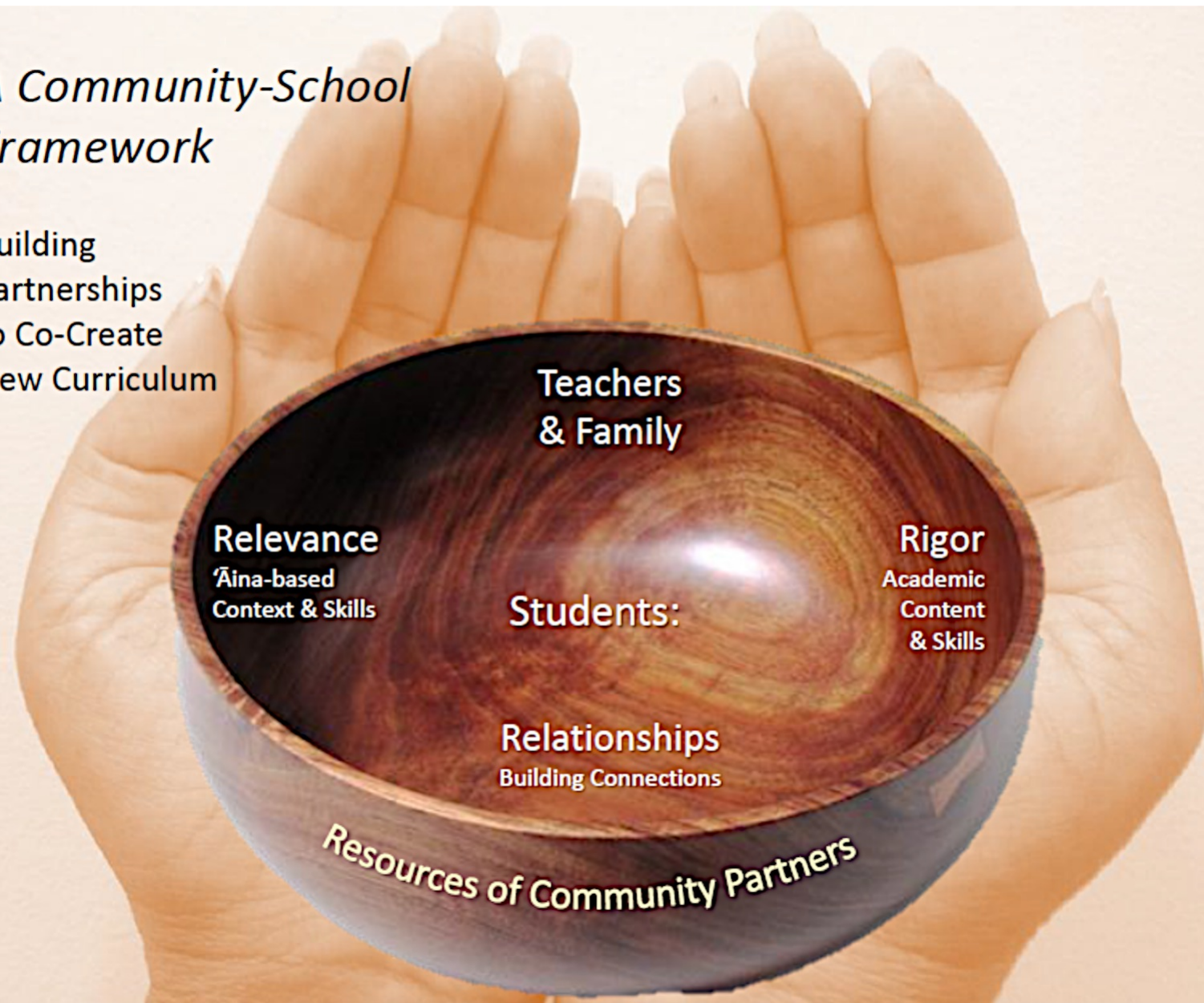
**how solid are your
relationships?**

Thought #3

“what do you need?”

A Community-School Framework

Building Partnerships to Co-Create New Curriculum



Teachers & Family

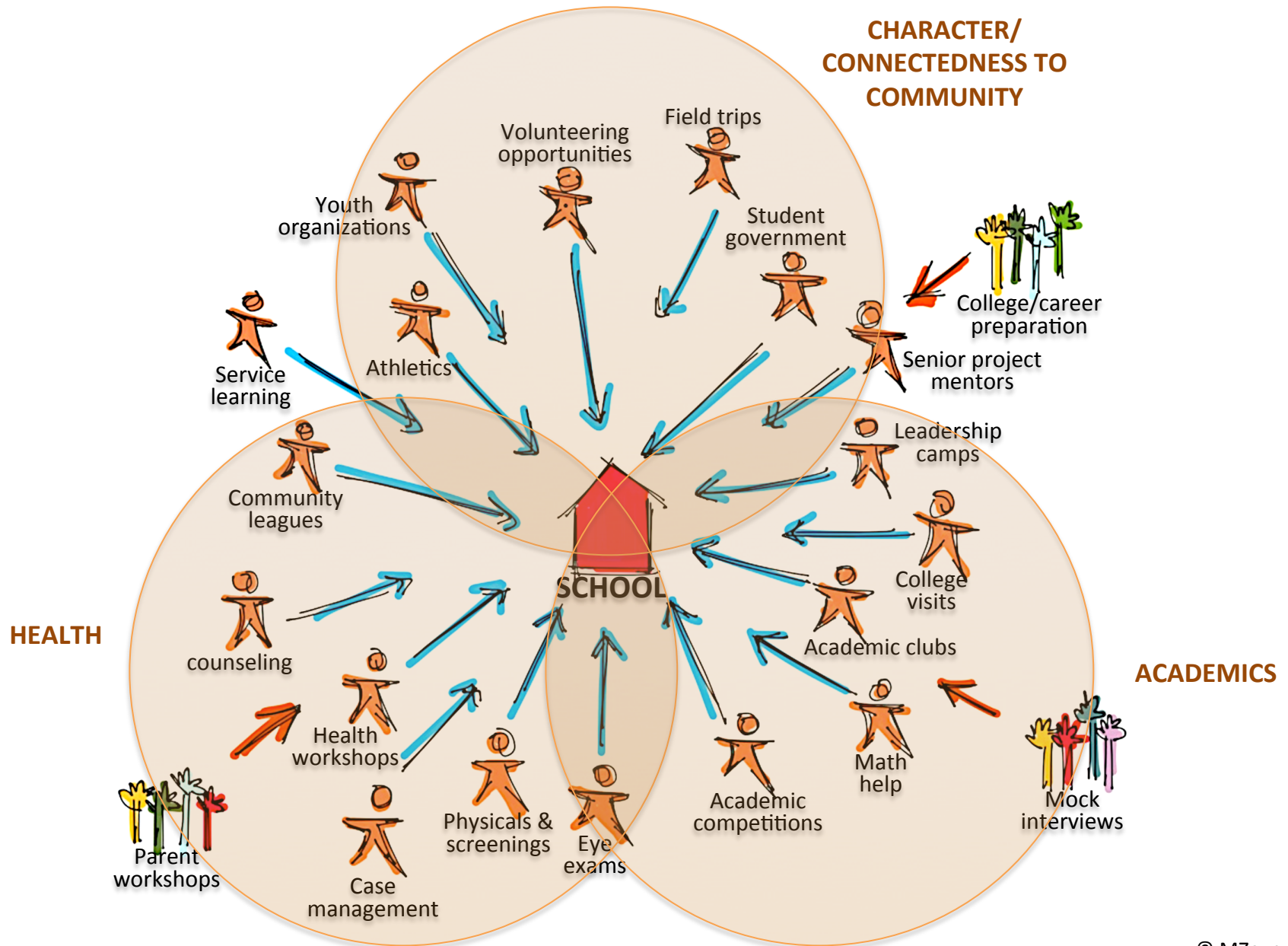
Relevance
Āina-based
Context & Skills

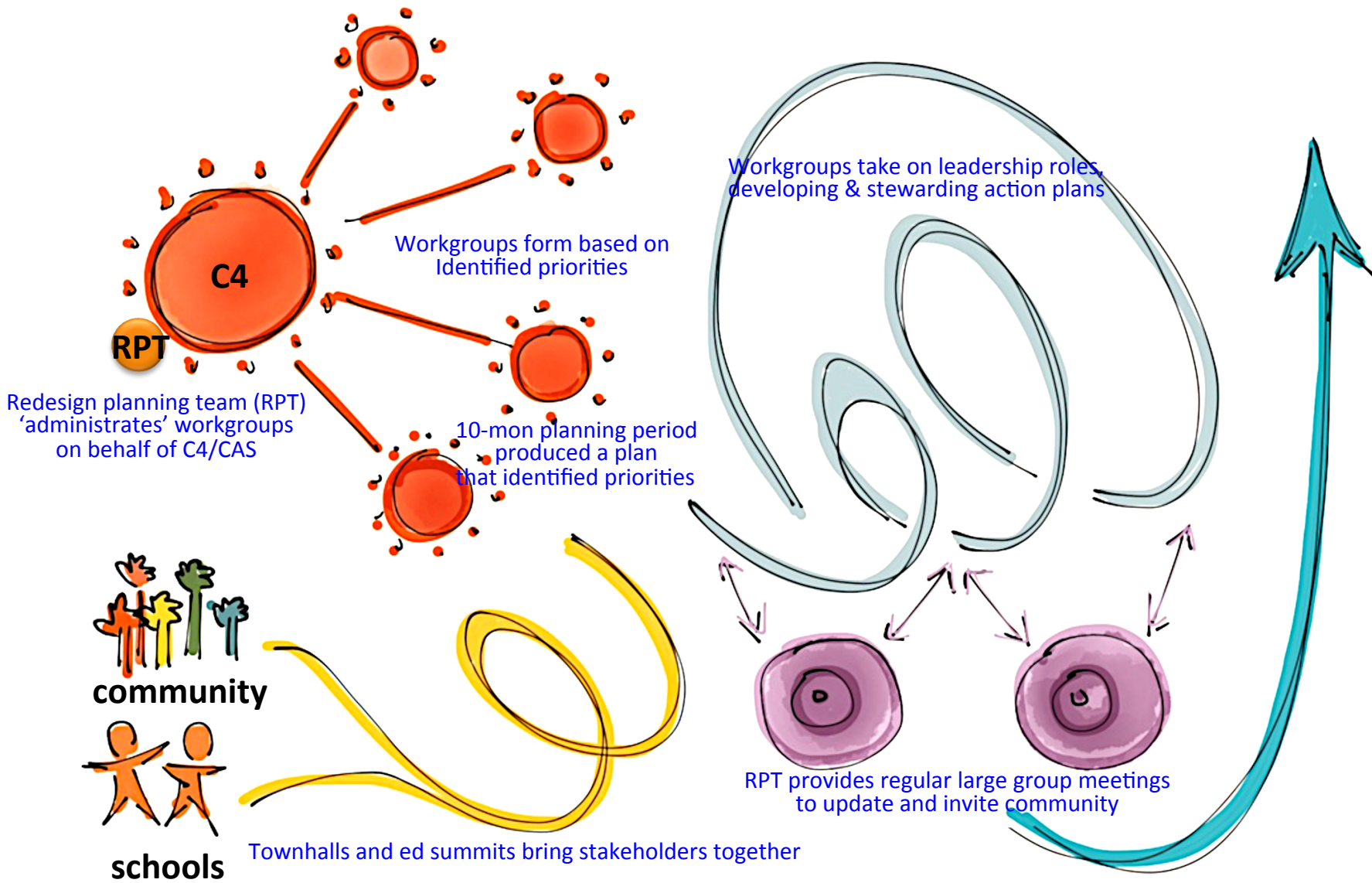
Rigor
Academic
Content & Skills

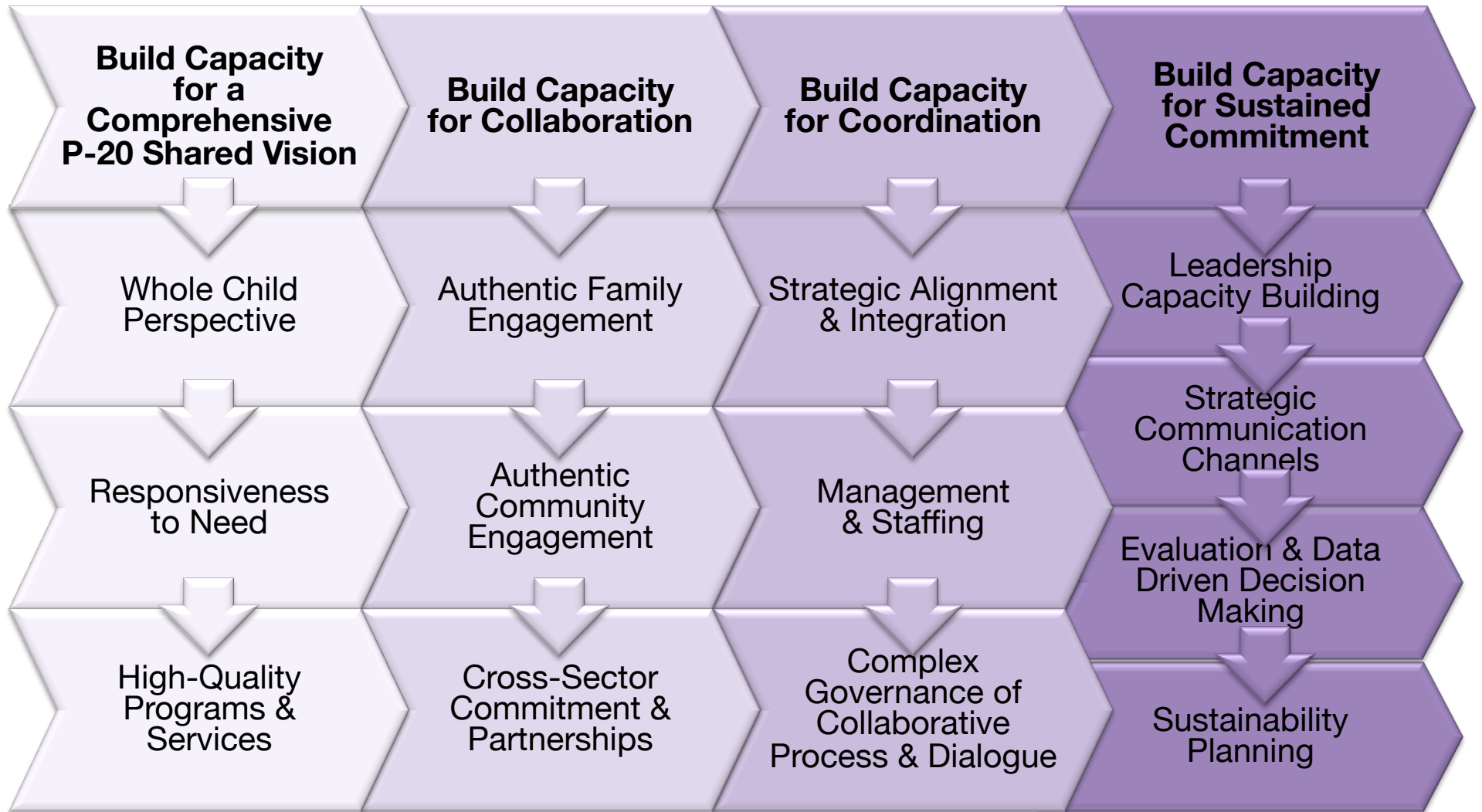
Students:

Relationships
Building Connections

Resources of Community Partners







© MZeug 2013

4 capacities, developed from lessons learned, frame an implementation rubric



Keep up with



Castle Redesign



Castle_Redesign



Stay tuned for updates about our website



castleredesign@gmail.com



re-imagining education

Want to learn more?



[Marlene Zeug@notes.k12.hi.us](mailto:Marlene_Zeug@notes.k12.hi.us)



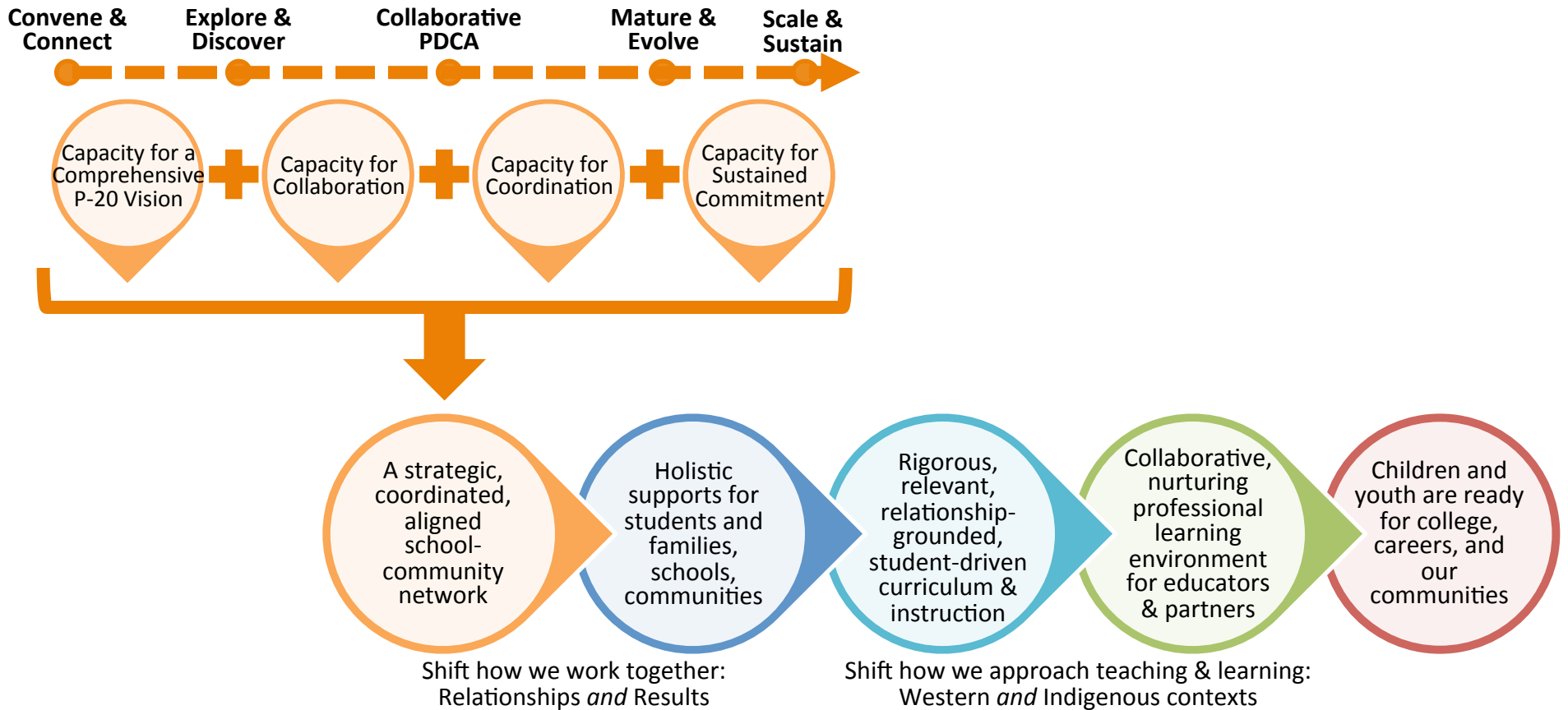
[Camille Masutomi@notes.k12.hi.us](mailto:Camille_Masutomi@notes.k12.hi.us) for



access to more resources

**Castle Redesign Initiative logo designed by CHS student Kiana Ringuette*

School/Community Collaboration Theory of Change



Three Tiers of Engagement for Community Partners

Three tiers as applied to Community Partner Type – Curriculum Co-developers:

- Tier 1 – Full engagement: turnkey programs for students requiring little design effort, mostly scaffolding with similar Community Partners and educators, and requiring coordination and scheduling support.
- Tier 2 - Content co-development capacity building in process, staff identified to co-design educational experience with educators, student users, and related Community Partners to ensure alignment with requirements. Funding to support staff engagement may or may not be in place.
- Tier 3 - Content and/or Site only available, subject matter experts available to execute curriculum co-development with Castle educators, student users.

PROPOSED PHASE 1 OF COMMUNITY PARTNER DEVELOPMENT (Calendar Years 2013-2014)

Years 1

- Create an online Community of Practice and internal Castle protocols with Community Partners for the Po'okela Academy.
 - Face-to-face communication occurs as needed
- Support the integration of Community Partners specific to the Po'okela Academy

Year 2

- Expand the reach beyond Po'okela to the other Small Learning Communities

Phase 1 Year 1, 2013 – progress

- 53 Pookela Academy students at community partner sites one to two afternoons a week for work place readiness
 - 43 at 6 aina-based organizations
 - 10 at business
- The PAF facilitated teacher teams creating 4 interdisciplinary curriculum units – project- and place-based culturally relevant and aligned to the Common Core State Standards.
 - Implement, evaluate, refine
 - Eight more by June 2014 co-created with community partners
- 7 community partners participating in Common Core Black Belt training
- 55 CPs with information on Hawaii Teacher Hub
- Castle On-line Community of Practice via SeaHarmony
 - Dovetail with Hawaii Teacher Hub
- Funding secured for school-based site coordinator and instructional leader
- A Family Hui group at 6 elementary schools